

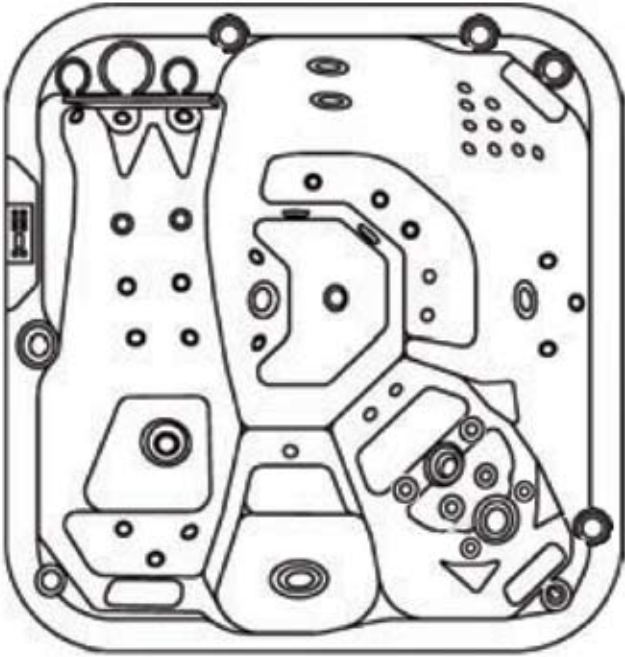
Avanti



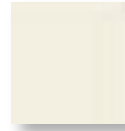
Knightwood Leisure Ltd
Unit 11, The Old Forge, Dean Hill Park, West Dean,
Salisbury, Wiltshire SP5 1EZ Tel: 01794 342104
www.touchspas.com email: sales@touchspas.com

touchspas 2008 RANGE

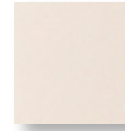
Avanti



colour options Acrylic shells



white



alba



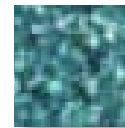
sierra



summer
sapphire



caribbean
blue



galaxy

- 5 seat rectangular Spa
- 2060mm x 1920mm x 870mm
- 38 Hydromassage Jets
- 14 air injectors with air blower
- 2 speed Motor 2HP and 2HP jet motor
- Electronic control system with 3KW electric heater
- Ozone disinfection system
- LED colour wash lighting
- "Natural" synthetic wood cabinet
- Insulated heavy duty thermal cover



Knightwood Leisure Ltd
Unit 11, The Old Forge, Dean Hill Park, West Dean,
Salisbury, Wiltshire SP5 1EZ Tel: 01794 342104
www.touchspas.com email: sales@touchspas.com



Xariana



touchspas 2008 RANGE



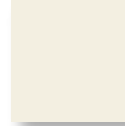
Knightwood Leisure Ltd
Unit 11, The Old Forge, Dean Hill Park, West Dean,
Salisbury, Wiltshire SP5 1EZ Tel: 01794 342104
www.touchspas.com email: sales@touchspas.com

Xariana

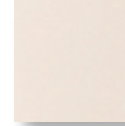


colour options

Acrylic shells



white



alba



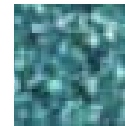
sierra



summer sapphire



caribbean blue



galaxy

- Large square 6 seat family Spa
- 2185mm x 2185mm x 1000mm
- 57 Hydromassage Jets
- 16 air injectors with air blower
- 2 speed filter / jet motor 2HP and 2 x 2HP jet motors
- Electronic control system with 3KW electric heater
- Ozone disinfection system
- LED colour wash lighting
- "Natural" synthetic wood cabinet
- Insulated heavy duty thermal cover



Knightwood Leisure Ltd
Unit 11, The Old Forge, Dean Hill Park, West Dean,
Salisbury, Wiltshire SP5 1EZ Tel: 01794 342104
www.touchspas.com email: sales@touchspas.com

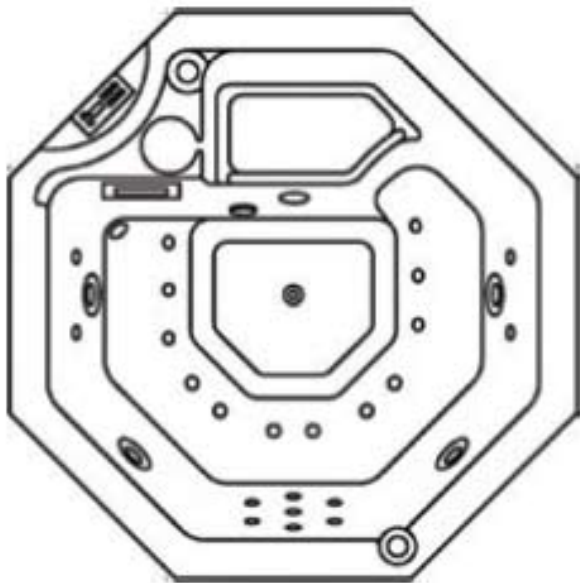


Tao



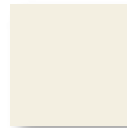
Knightwood Leisure Ltd
Unit 11, The Old Forge, Dean Hill Park, West Dean,
Salisbury, Wiltshire SP5 1EZ Tel: 01794 342104
www.touchspas.com email: sales@touchspas.com

Tao

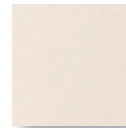


colour options

Acrylic shells



white



alba



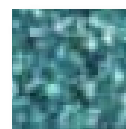
sierra



summer
sapphire



caribbean
blue



galaxy

- 5 seat octagonal Spa
- 1700mm x 1700mm x 830mm
- 16 Hydromassage Jets
- 12 air injectors with air blower
- 2 speed filter / jet Motor 2HP
- Electronic control system with 3KW electric heater
- Ozone disinfection system
- LED colour wash lighting
- "Natural" synthetic wood cabinet
- Insulated heavy duty thermal cover



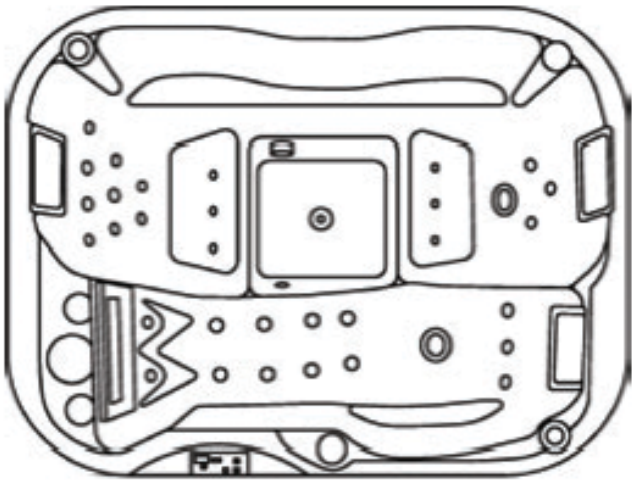
Knightwood Leisure Ltd
Unit 11, The Old Forge, Dean Hill Park, West Dean,
Salisbury, Wiltshire SP5 1EZ Tel: 01794 342104
www.touchspas.com email: sales@touchspas.com



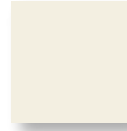
Cian



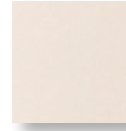
Cian



colour options Acrylic shells



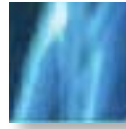
white



alba



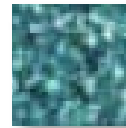
sierra



summer
sapphire



caribbean
blue



galaxy

- 3 seat rectangular Spa
- 2050mm x 1500mm x 870mm
- 21 Hydromassage Jets
- 14 air injectors with air blower
- 2 speed filter / 2HP jet motor
- Electronic control system with 3KW electric heater
- Ozone disinfection system
- LED colour wash lighting
- "Natural" synthetic wood cabinet
- Insulated heavy duty thermal cover



Knightwood Leisure Ltd
Unit 11, The Old Forge, Dean Hill Park, West Dean,
Salisbury, Wiltshire SP5 1EZ Tel: 01794 342104
www.touchspas.com email: sales@touchspas.com

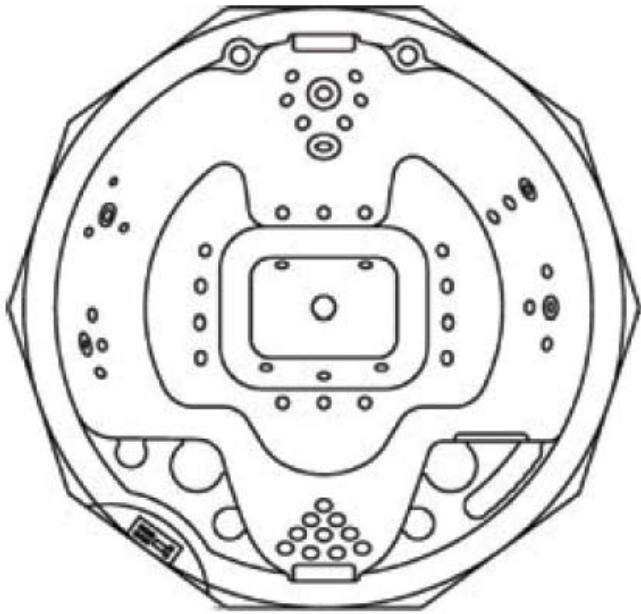


Corada



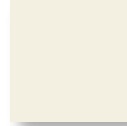
Knightwood Leisure Ltd
Unit 11, The Old Forge, Dean Hill Park, West Dean,
Salisbury, Wiltshire SP5 1EZ Tel: 01794 342104
www.touchspas.com email: sales@touchspas.com

Corada

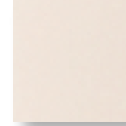


colour options

Acrylic shells



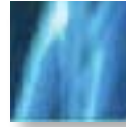
white



alba



sierra



summer sapphire



caribbean blue



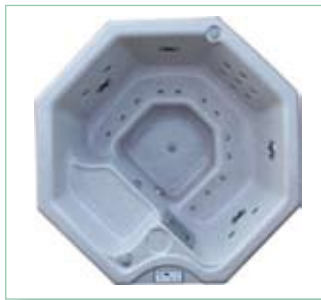
galaxy

- 6 seat 10 sided designer Spa
- 2140mm x 2140mm x 1000mm
- 38 Hydromassage Jets
- 14 air injectors with air blower
- 2 speed filter / jet motor 2HP and 2HP jet motor
- Electronic control system with 3KW electric heater
- Ozone disinfection system
- LED colour wash lighting
- "Natural" synthetic wood cabinet
- Insulated heavy duty thermal cover



Knightwood Leisure Ltd
Unit 11, The Old Forge, Dean Hill Park, West Dean,
Salisbury, Wiltshire SP5 1EZ Tel: 01794 342104
www.touchspas.com email: sales@touchspas.com

Price list



Tao - 220kg / 700 litres / 13 amp power supply

An economical octagonal 5 seat. This spa features 16 jets, 12 air injectors. Equipment includes a two speed 2HP quiet running massage/filter motor, air boost system, LED colour wash lighting, electronic control system with 3KW heater. Ozone. Cabinet built in revolutionary "Natural" synthetic, no maintenance wood. Options include Cedar cabinet and Stainless steel jet trim

Retail price
incl. VAT

£3995



Cian - 270kg / 850 litres / 13 amp power supply

A compact 3 seat with comfortable lounger. This spa features 21 jets, 14 air injectors and 3 sculptured seats with integrated headrests. Equipment includes a two speed 2HP quiet running massage/filter motor, air boost system, LED colour wash lighting, electronic control system with 3KW heater Ozone. Cabinet built in revolutionary "Natural" synthetic, no maintenance wood. Options include Cedar cabinet and Stainless steel jet trim

Retail price
incl. VAT

£4295



Avanti - 330kg / 1020 litres / 20 amp power supply

Family sized 5 seat spa with comfortable lounger. This spa features 38 jets, 14 air injectors and 5 comfortable seats. 3 with integrated headrests. Equipment includes a two speed 2HP quiet running massage/filter motor, 2HP massage motor, air boost system, LED colour wash lighting, electronic control system with 3KW heater Ozone. Cabinet built in revolutionary "Natural" synthetic, no maintenance wood. Options include Cedar cabinet and Stainless steel jet trim

Retail price
incl. VAT

£4975



Corada - 380kg / 1350 litres / 20 amp power supply

Comfortable designer 6 seat 10 sided spa with recliner seats suitable for even the tallest of people. This spa features 38 jets, 14 air injectors and 2 sculptured seats with integrated headrests. Equipment includes a two speed 2HP quiet running massage/filter motor, 2HP massage motor, air boost system, LED colour wash lighting, electronic control system with 3KW heater Ozone. Cabinet built in revolutionary "Natural" synthetic, no maintenance wood. Options include Cedar cabinet and Stainless steel jet trim

Retail price
incl. VAT

£5545



Xariana - 420kg / 1650 litres / 30 amp power supply

A large square powerful 6 seat spa also with comfortable lounger. This spa features 57 jets, 16 air injectors and 3 seats with integrated headrests. Equipment includes a two speed 2HP quiet running massage/filter motor, 2 x 2HP massage motors, air boost system, LED colour wash lighting, electronic control system with 3KW heater Ozone. Cabinet built in revolutionary "Natural" synthetic, no maintenance wood. Options include Cedar cabinet and Stainless steel jet trim

Retail price
incl. VAT

£5995



Knightwood Leisure Ltd
Unit 11, The Old Forge, Dean Hill Park, West Dean,
Salisbury, Wiltshire SP5 1EZ Tel: 01794 342104
www.touchspas.com email: sales@touchspas.com

